

Quality

Material. Durability. Finish



**PERFECT
MOBILITY**

Functionality

Movement. Detail. Ease



**DRAWER
SYSTEMS**

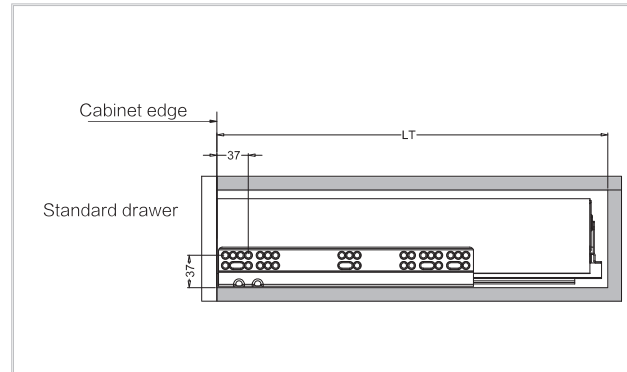
SLENDER METAL DRAWER - HEIGHT 89



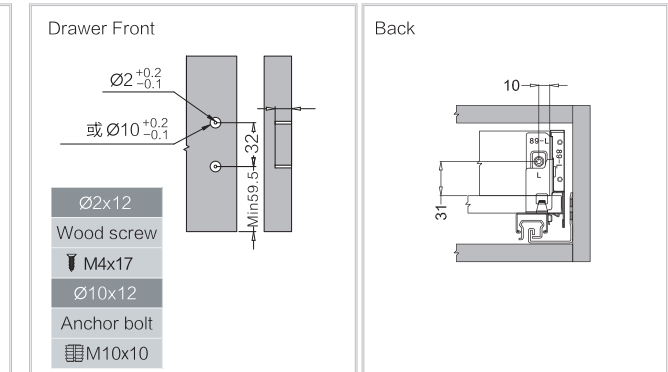
Model : **808A-89**
 Drawer Height : 89mm
 Size : 300mm, 350mm, 400mm, 450mm, 500mm, 550mm
 Finish : Silver
 Weight Capacity : 40Kgs

Installation dimensions(mm)

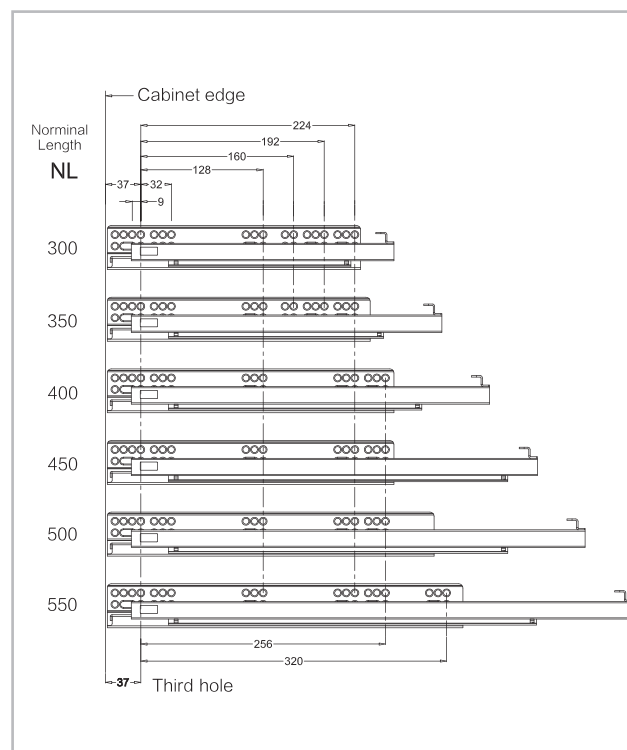
Nominal Slide Length=NL Internal Cabinet Depth=LT=NL+3



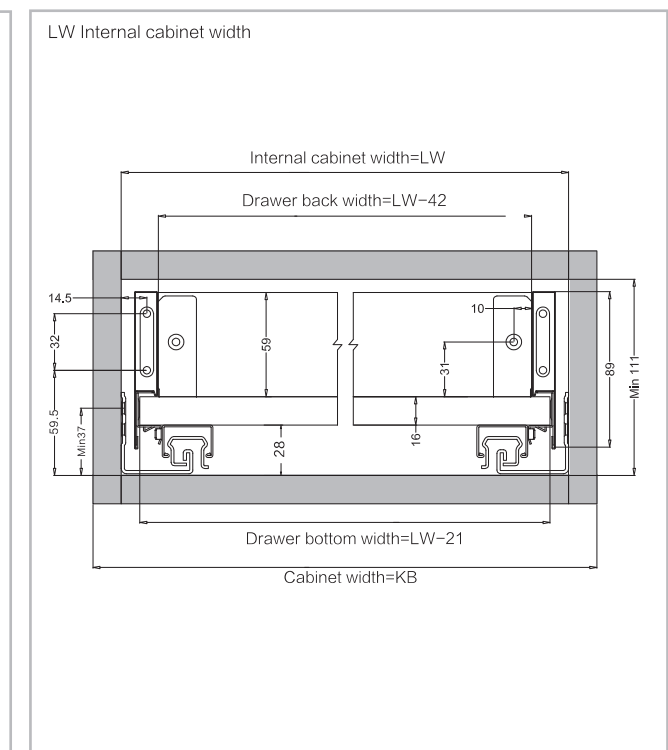
Drawer Installation dimensions(mm)



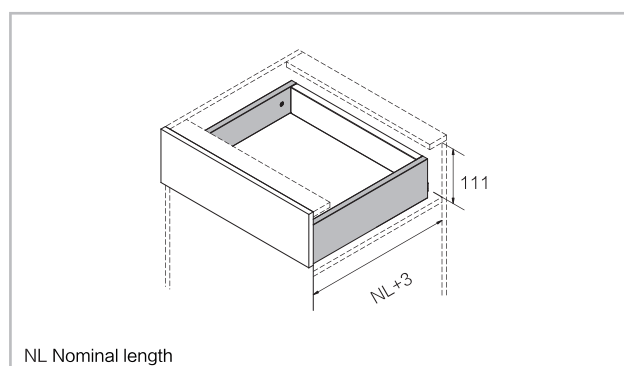
Screw Positions of the Sides(mm)



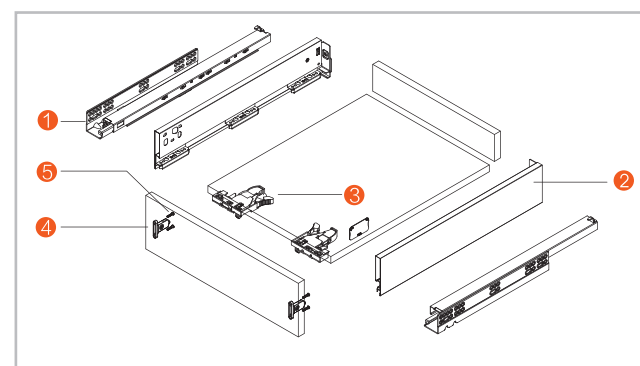
Installation Dimensions(mm)



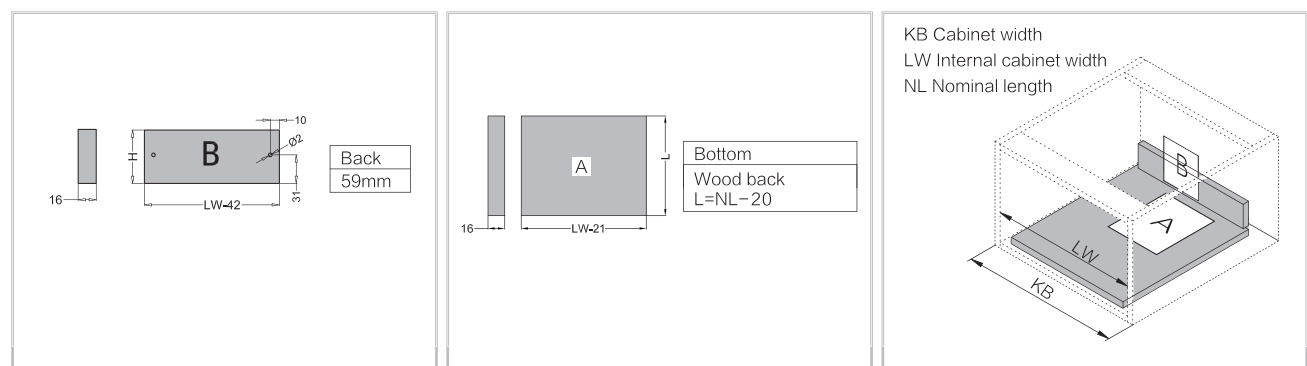
Space Requirement



The basic components



Drawer Back and Bottom Dimensions(mm)



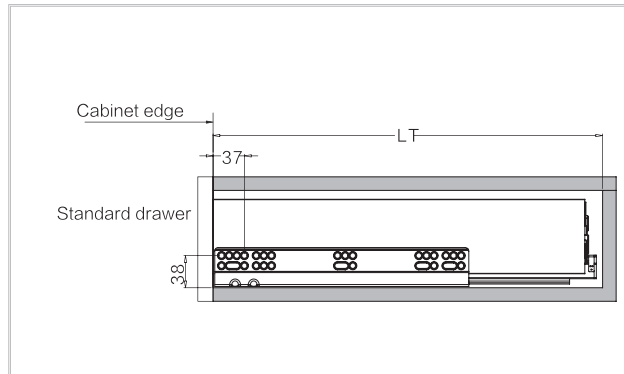
808 SERIES SLENDER METAL DRAWER - HEIGHT 121



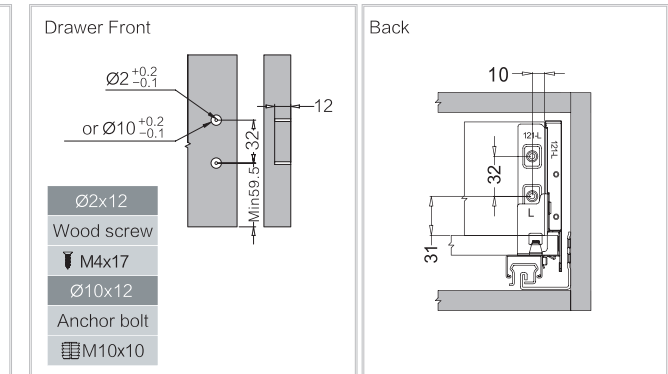
Model : **808-121**
 Drawer Height : 121mm
 Size : 450mm, 500mm, 550mm
 Finish : Silver
 Weight Capacity : 40Kgs

Installation dimensions(mm)

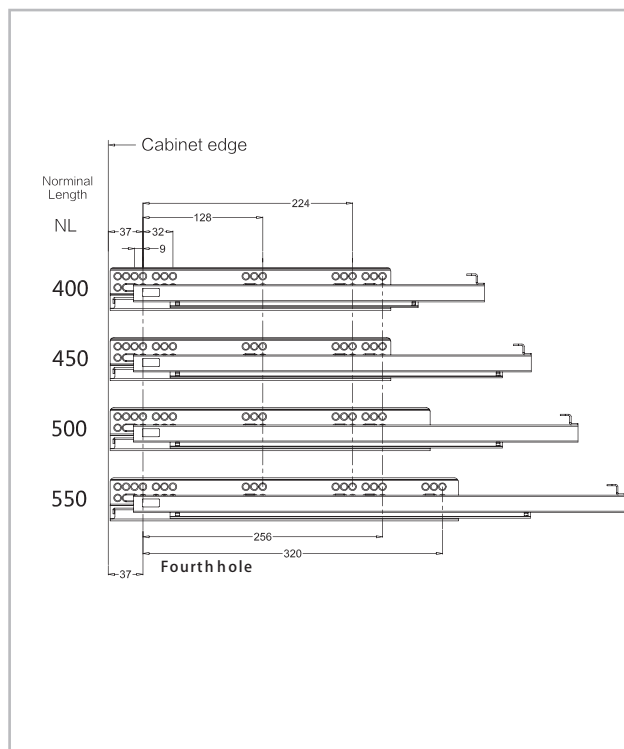
Nominal Slide Length=NL Internal Cabinet Depth=LT=NL+3



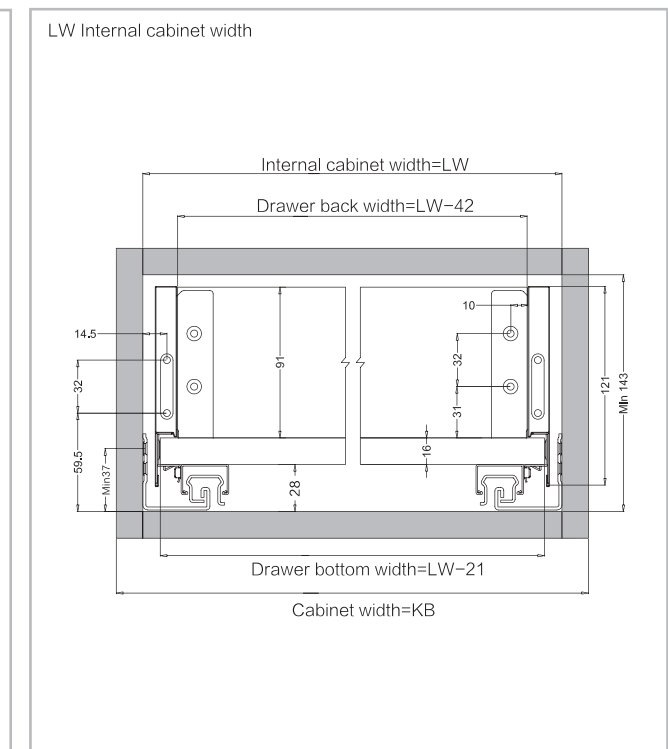
Drawer Installation dimensions(mm)



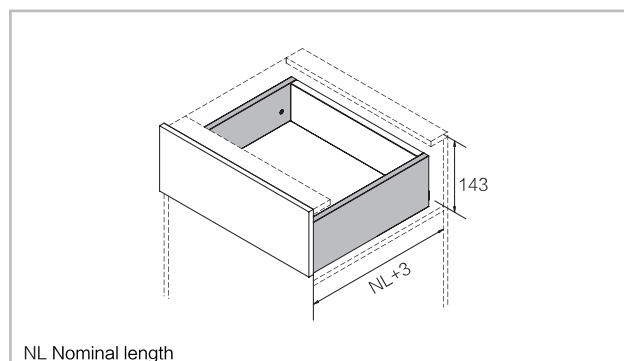
Screw Positions of the Sides(mm)



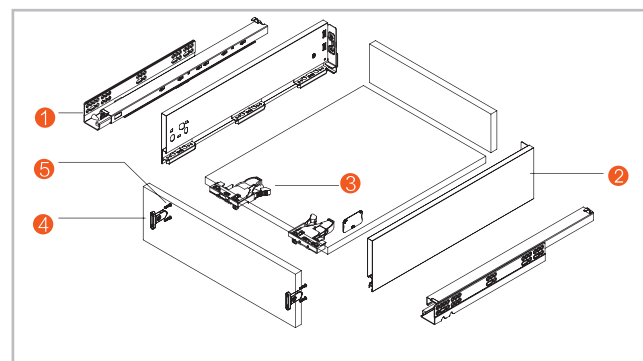
Installation Dimensions(mm)



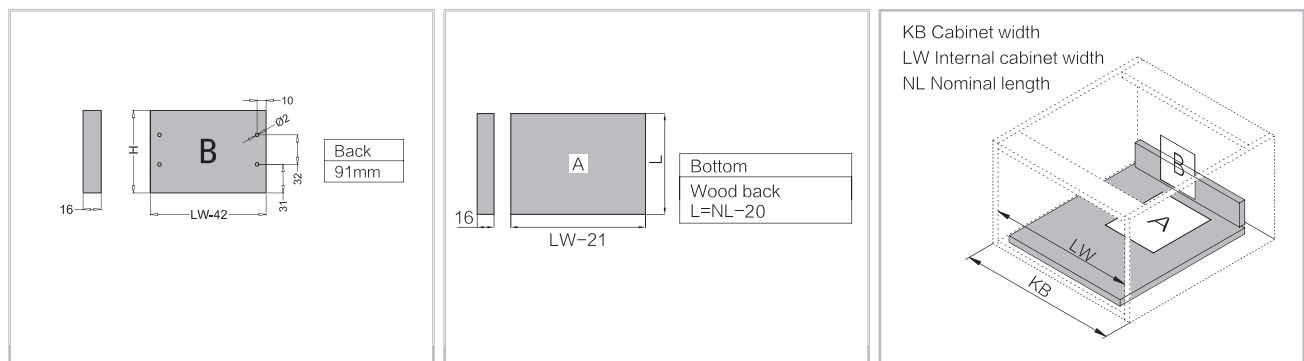
Space Requirement



The basic components



Drawer Back and Bottom Dimensions(mm)



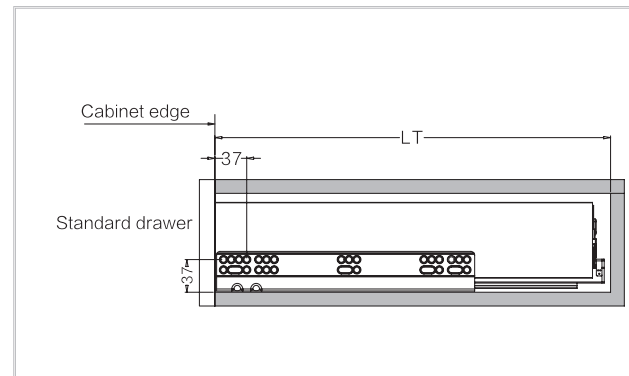
808 SERIES SLENDER METAL DRAWER - HEIGHT 185



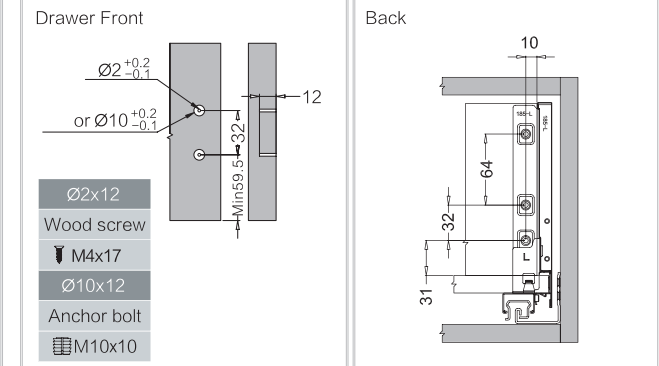
Model : **808-185**
 Drawer Height : 185mm
 Size : 400mm, 450mm, 500mm, 550mm
 Finish : Silver
 Weight Capacity : 40Kgs

Installation dimensions(mm)

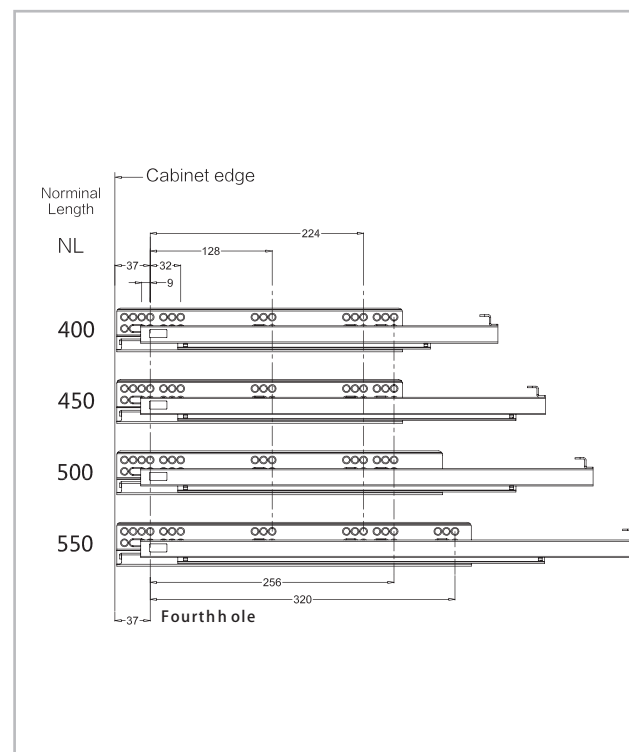
Nominal Slide Length=NL Internal Cabinet Depth=LT=NL+3



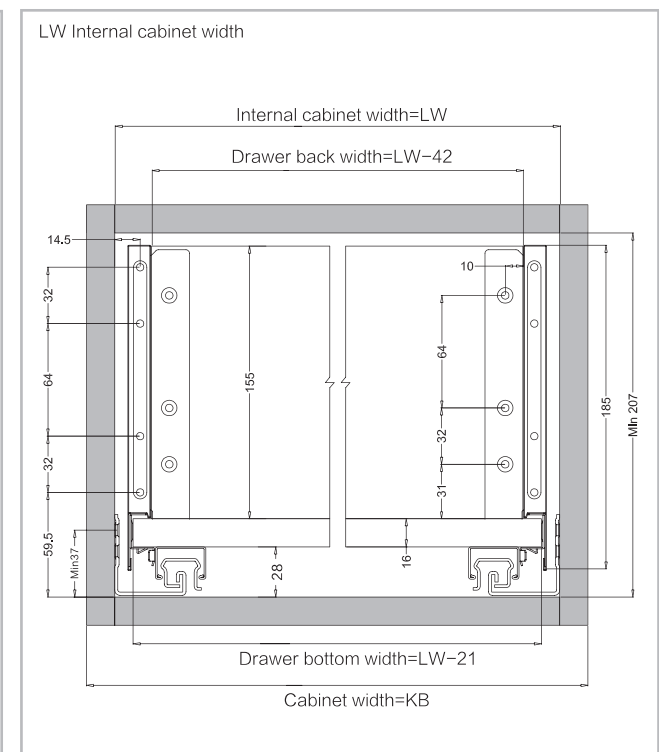
Drawer Installation dimensions(mm)



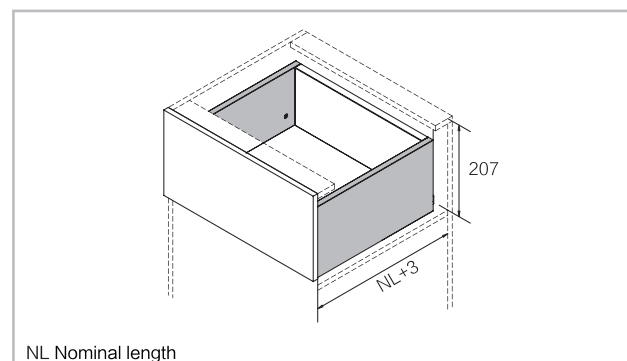
Screw Positions of the Sides(mm)



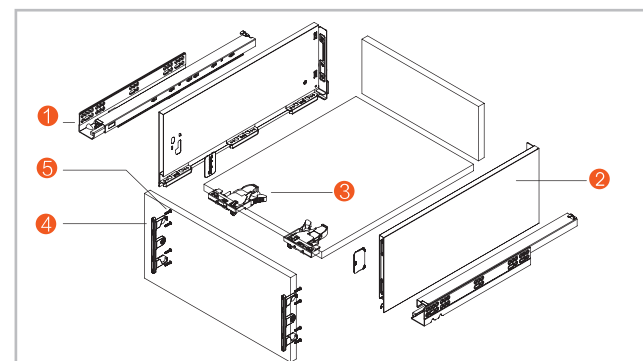
Installation Dimensions(mm)



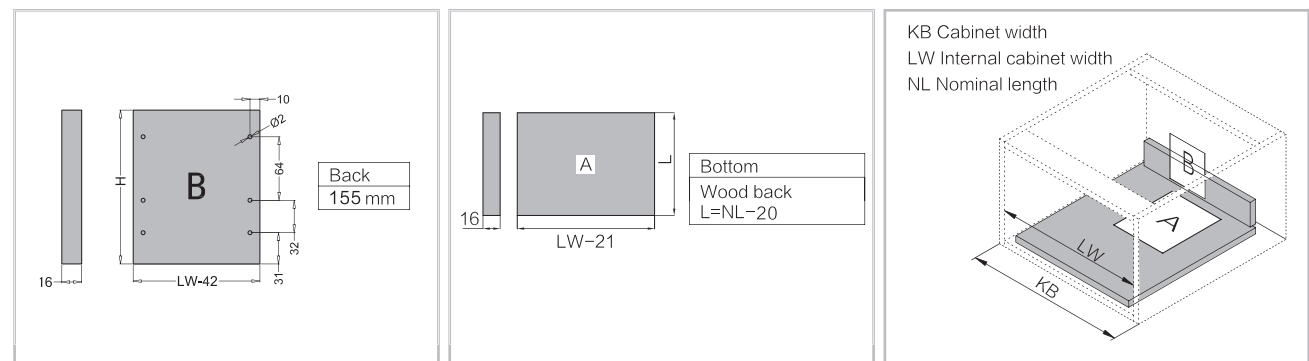
Space Requirement



The basic components



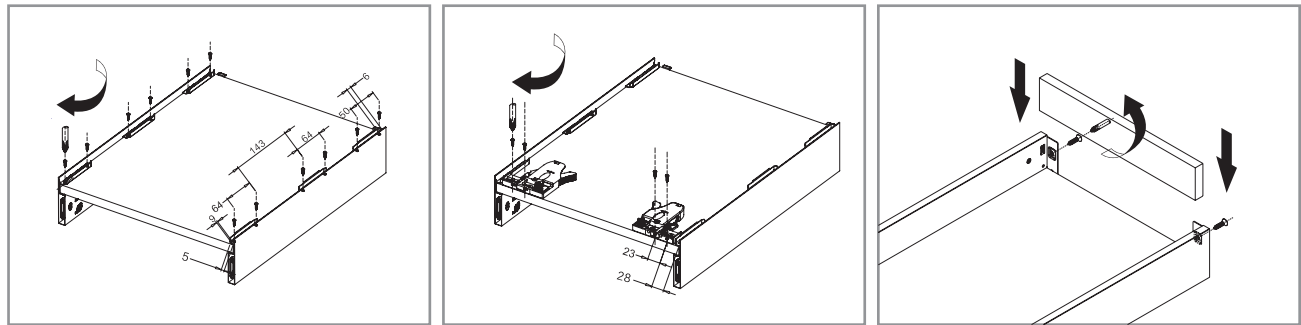
Drawer Back and Bottom Dimensions(mm)



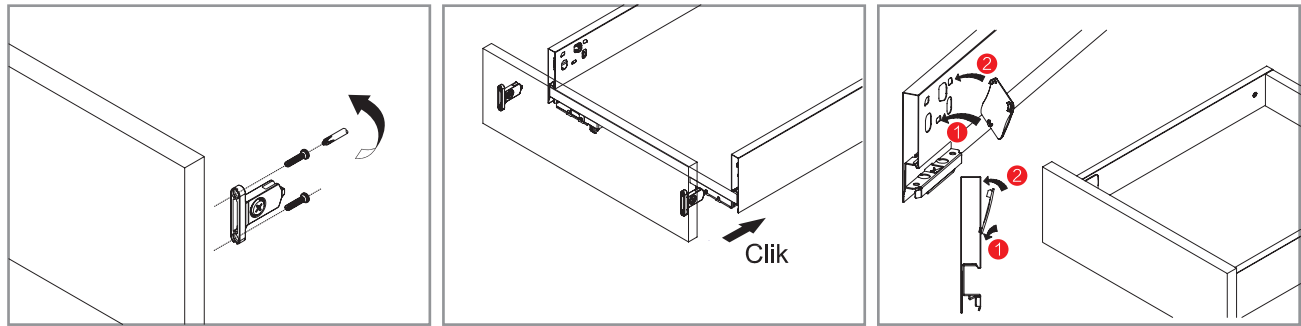
808 SERIES SLENDER DRAWER

DRAWER - Assembly, Adjustment & Removal

Drawer Assembly

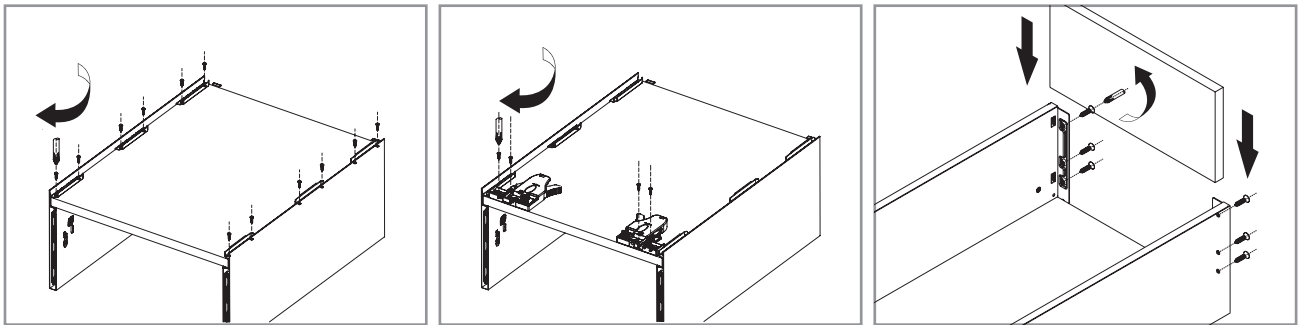


Drawer bottom assembly Locking Brackets assembly Drawer back assembly

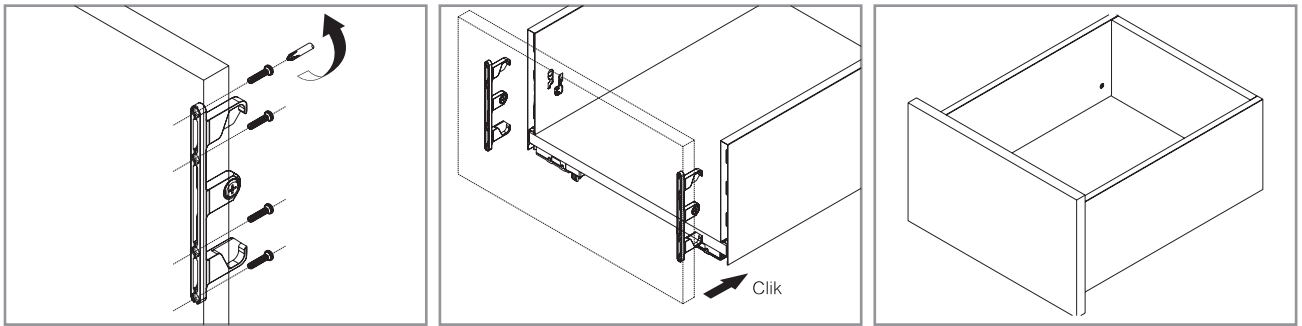


Drawer front assembly Locking Brackets assembly Drawer back assembly

Drawer Assembly

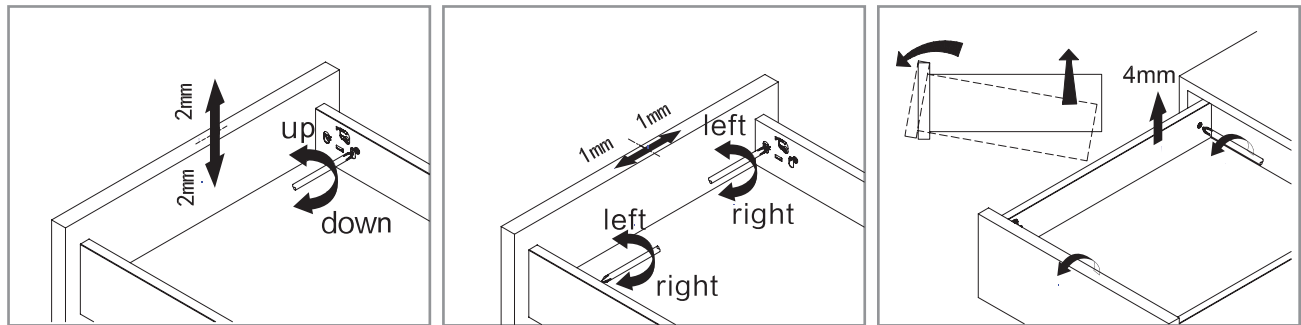


Bottom assembly Locking Brackets assembly Back assembly



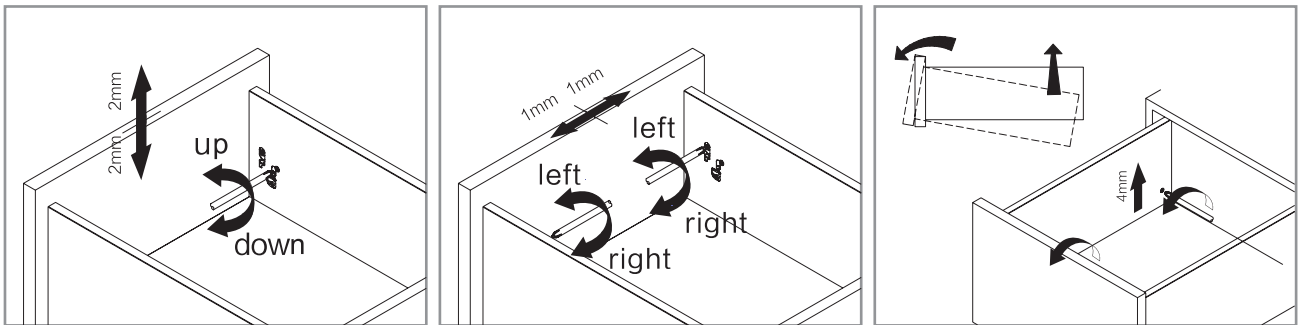
Front assembly Locking Brackets assembly Final assembly

Adjustment



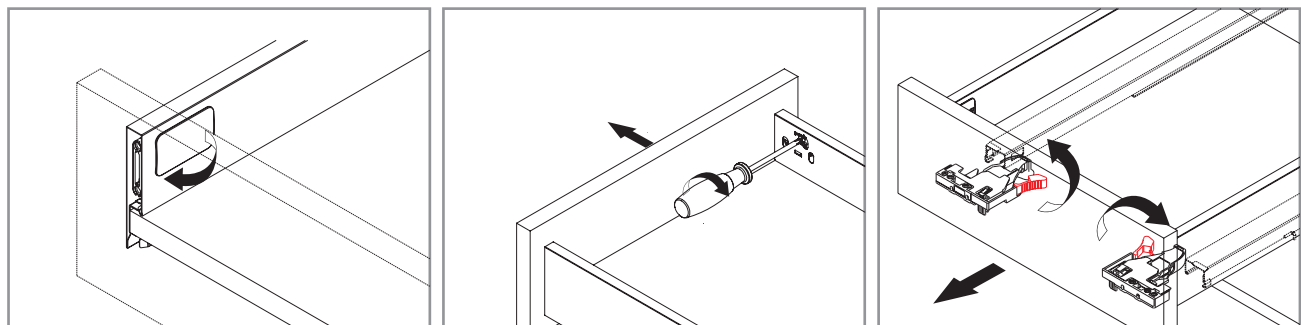
Up & down adjustment Left & right adjustment Tilt adjustment at drawer back

Adjustment



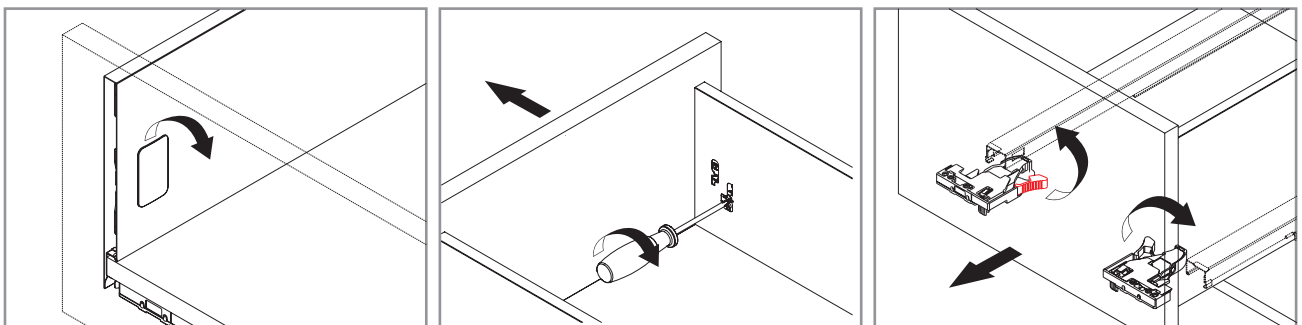
Up & down adjustment Left & right adjustment Tilt adjustment at drawer back

Removal



Tip up the cover and pull out Turn screw driver to release the drawer front Remove the drawer by pressing the locking bracket and then pull the drawer out

Removal



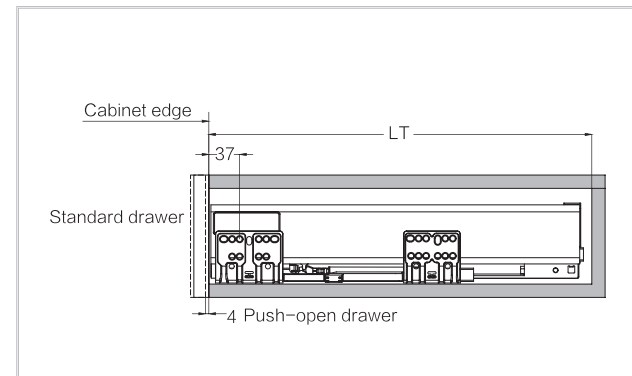
Tip up the cover and pull out Turn screw driver to release the drawer front Remove the drawer by pressing the locking bracket and then pull the drawer out

908 SERIES LUXURY DRAWER-B84 Shallow Drawer

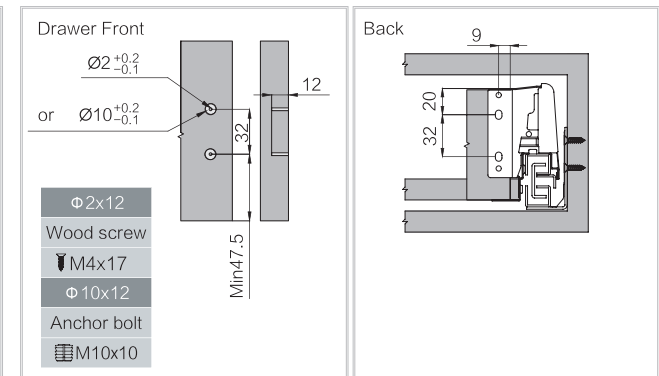


Model : **908TB-84**
 Drawer Height : 84mm
 Size : 300mm, 350mm, 400mm, 450mm, 500mm, 550mm
 Finish : Grey
 Weight Capacity : 40Kgs

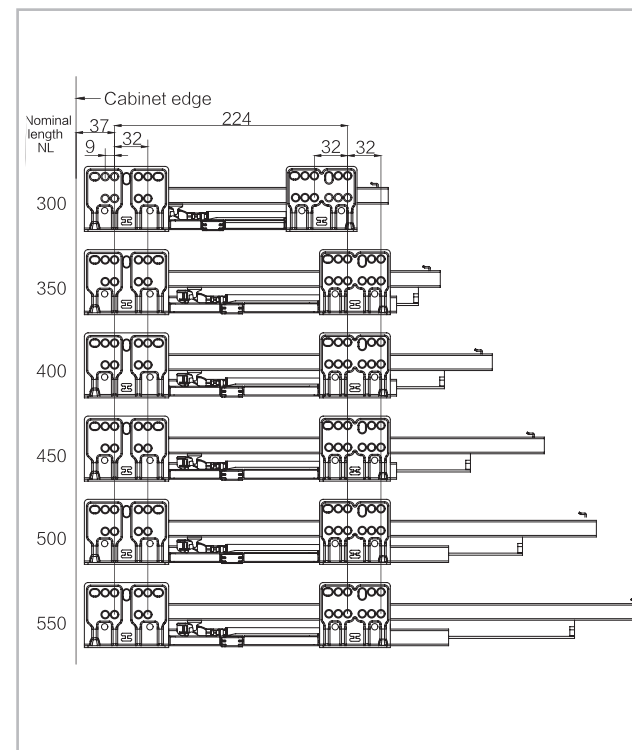
Installation dimensions(mm)



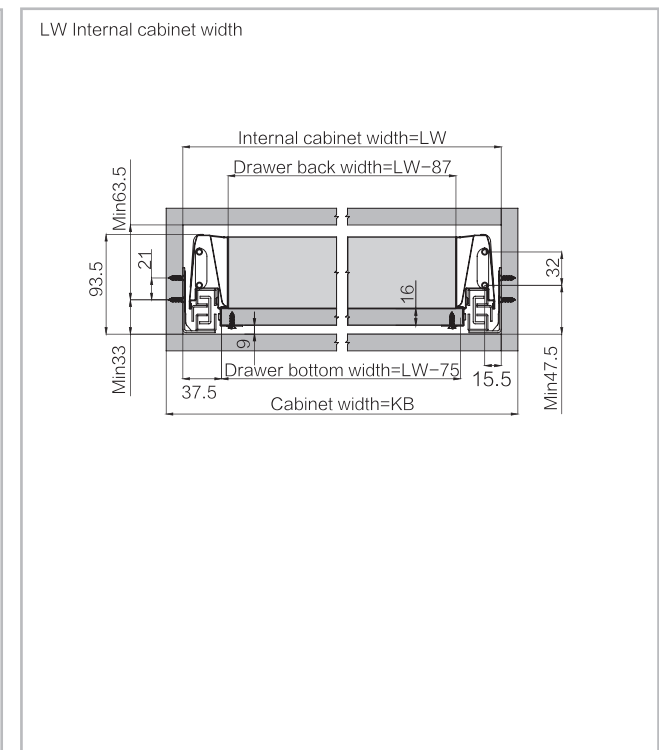
Drawer Installation dimensions(mm)



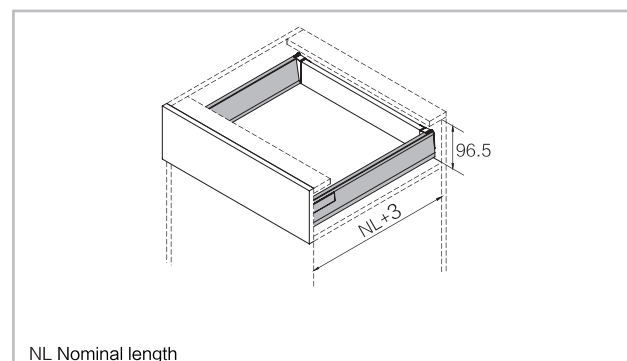
Screw Positions of the Sides(mm)



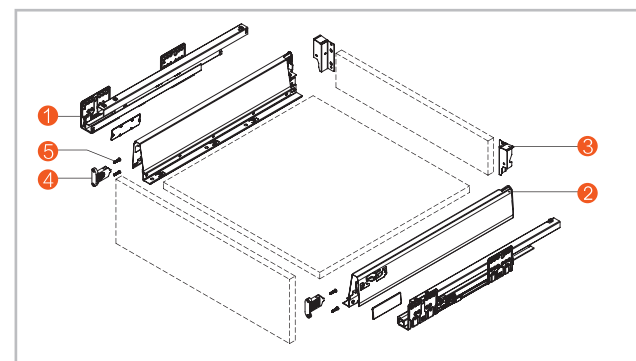
Installation Dimensions(mm)



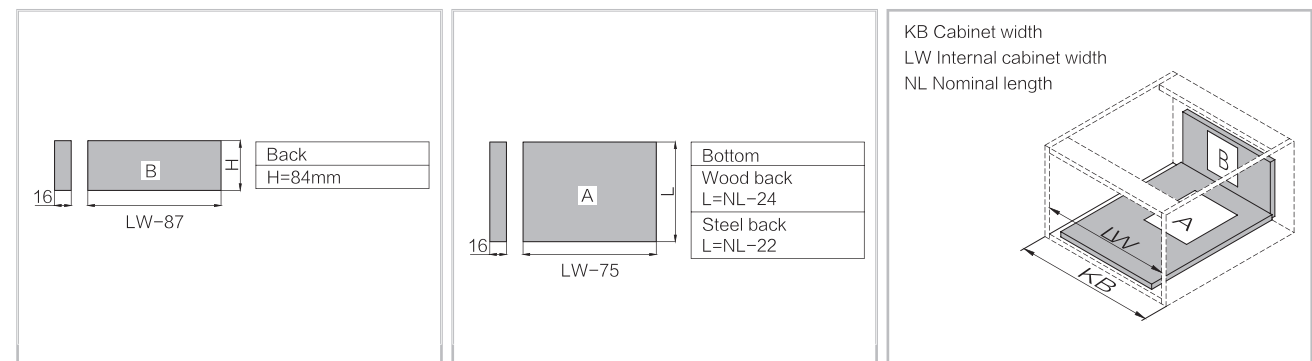
Space Requirement



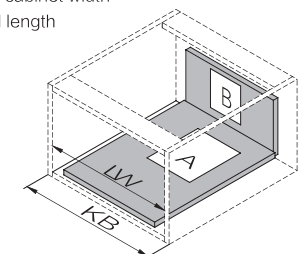
The basic components



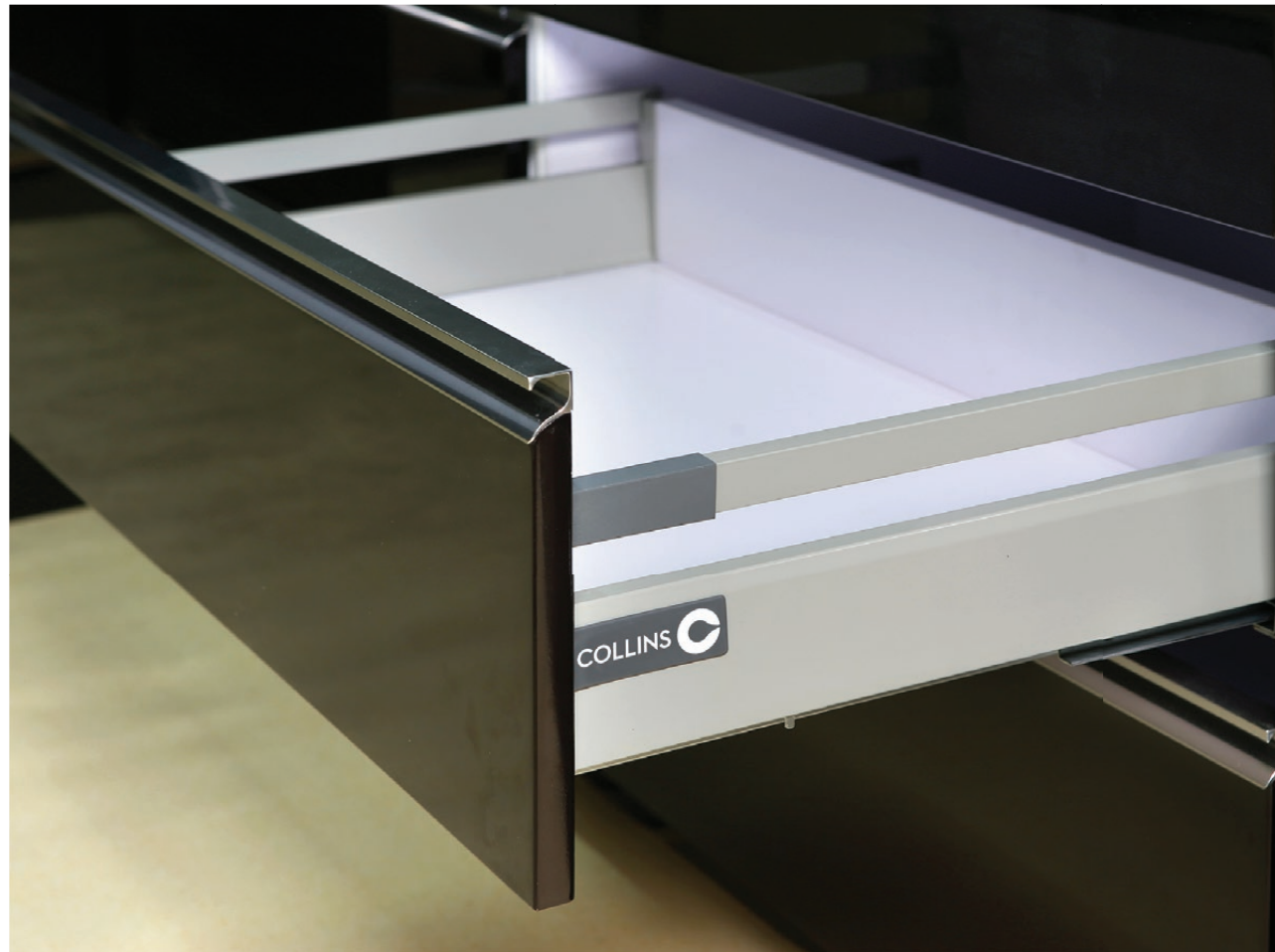
Drawer Back and Bottom Dimensions(mm)



KB Cabinet width
 LW Internal cabinet width
 NL Nominal length



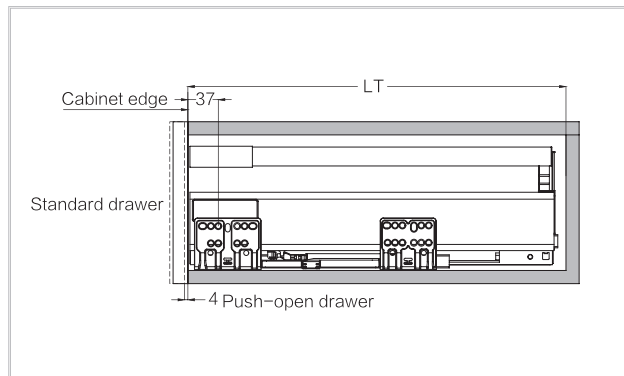
NL Nominal length



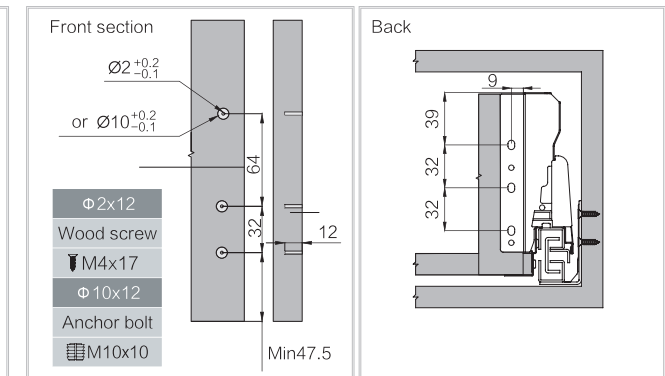
Model : **908TB-135**
 Drawer Height : 135mm
 Size : 450mm, 500mm, 550mm
 Finish : Silver
 Weight Capacity : 40Kgs

Installation dimensions(mm)

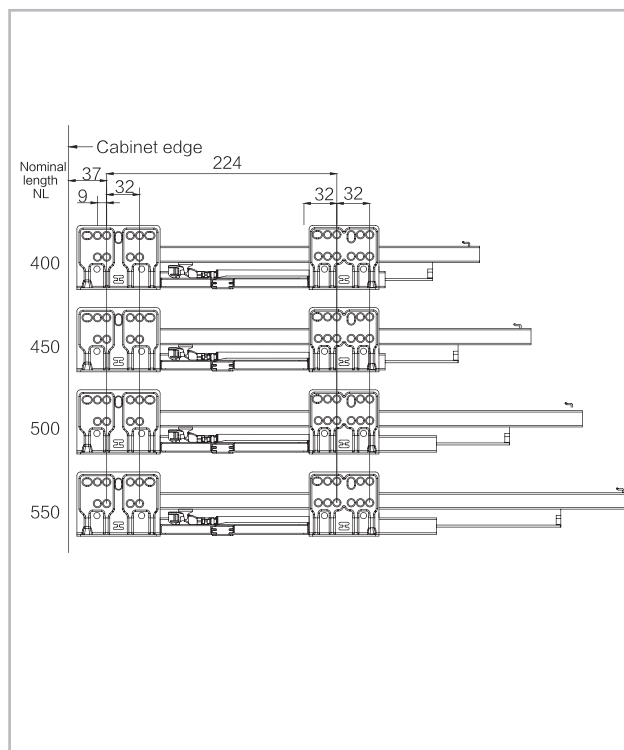
Nominal Slide Length=NL Internal Cabinet Depth=LT=NL+3



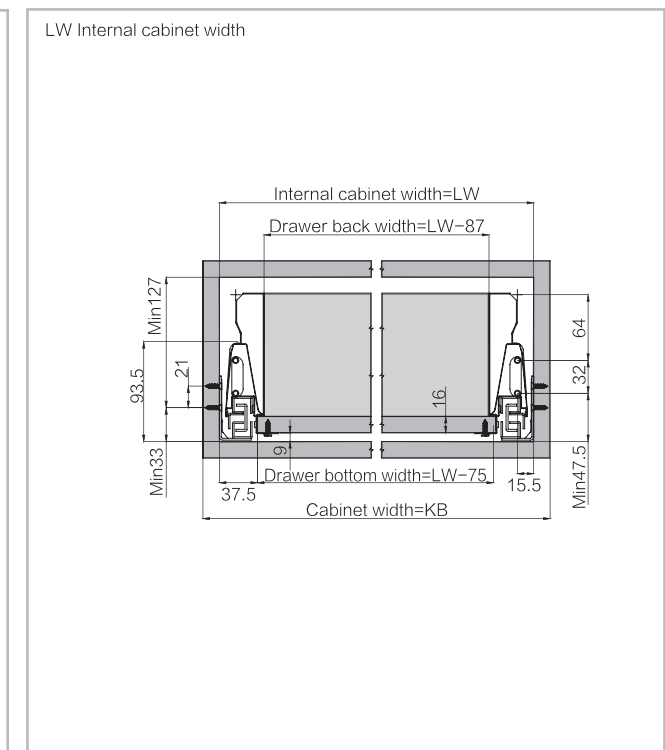
Drawer Installation dimensions(mm)



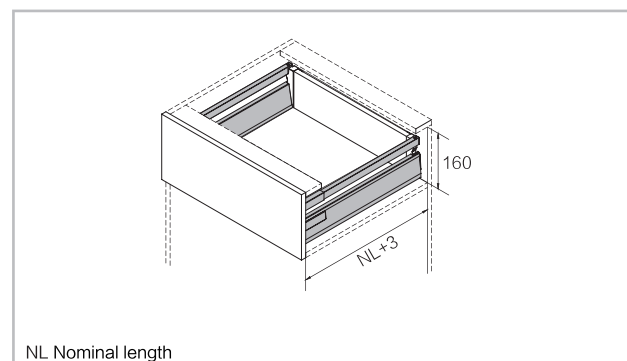
Screw Positions of the Sides(mm)



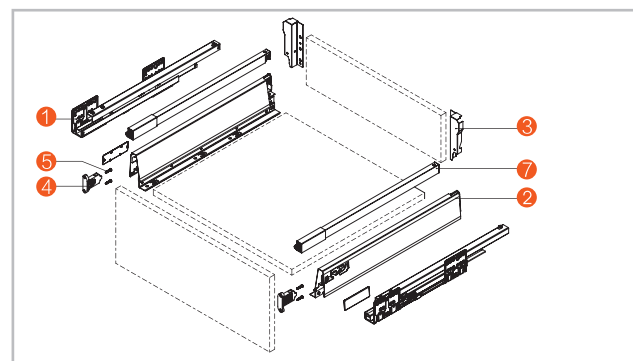
Installation Dimensions(mm)



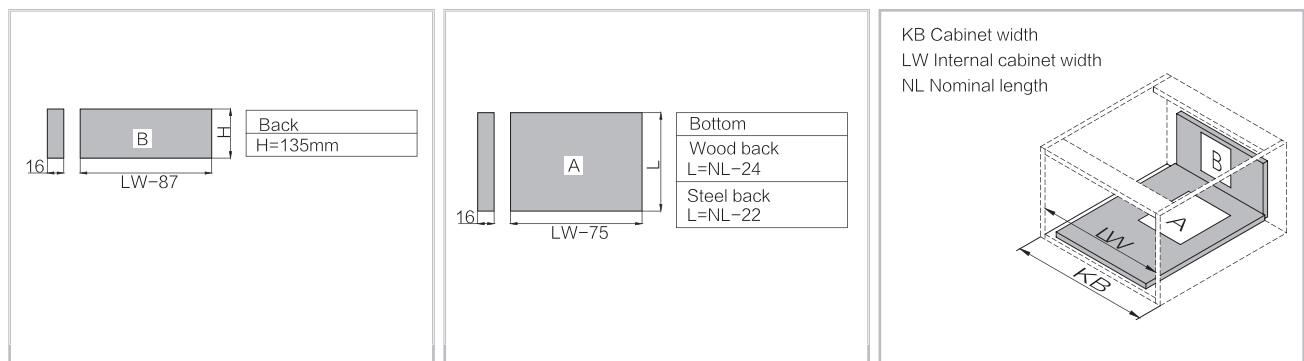
Space Requirement



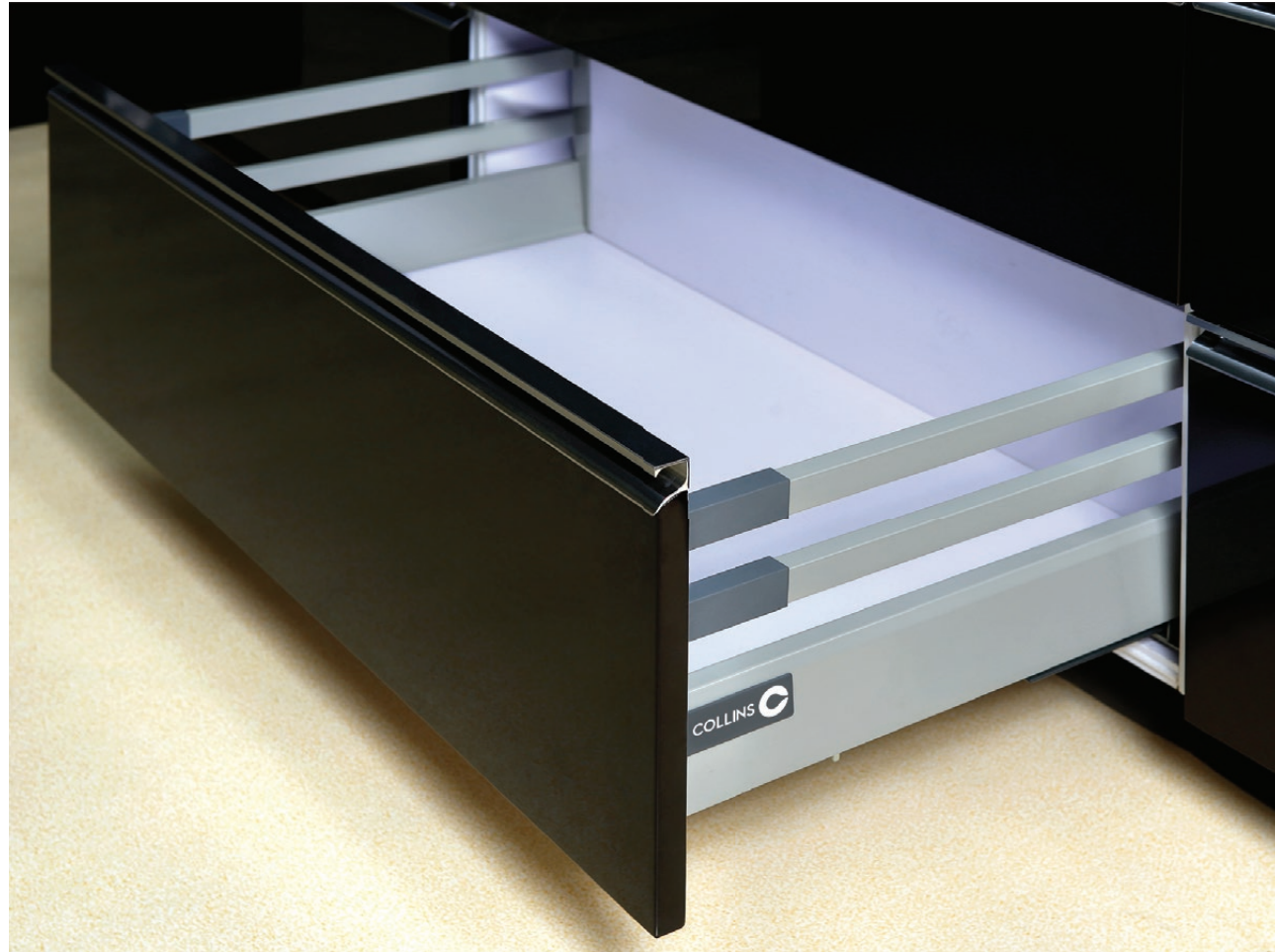
The basic components



Drawer Back and Bottom Dimensions(mm)



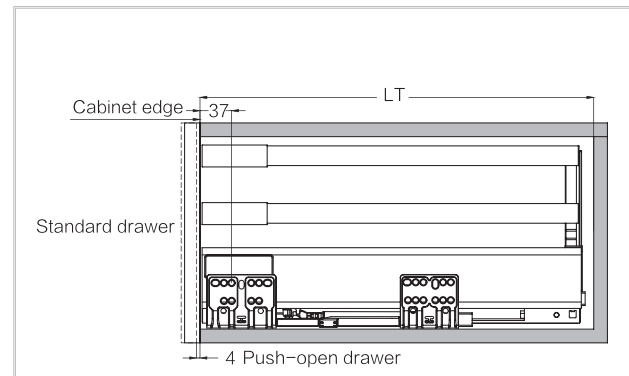
908 SERIES LUXURY DRAWER-B199 Pan Drawer



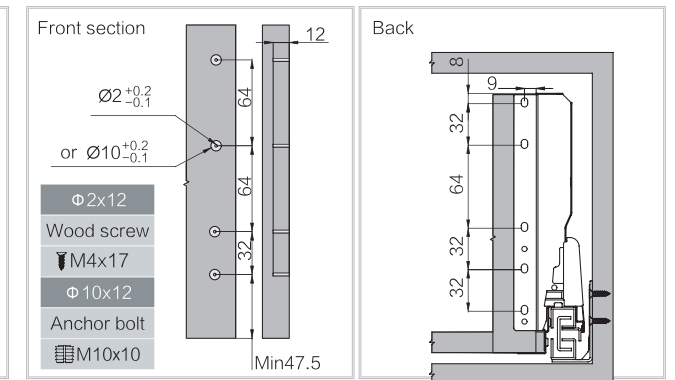
Model : **908TB-199**
 Drawer Height : 199mm
 Size : 400mm, 450mm, 500mm, 550mm
 Finish : Silver
 Weight Capacity : 40Kgs

Installation dimensions(mm)

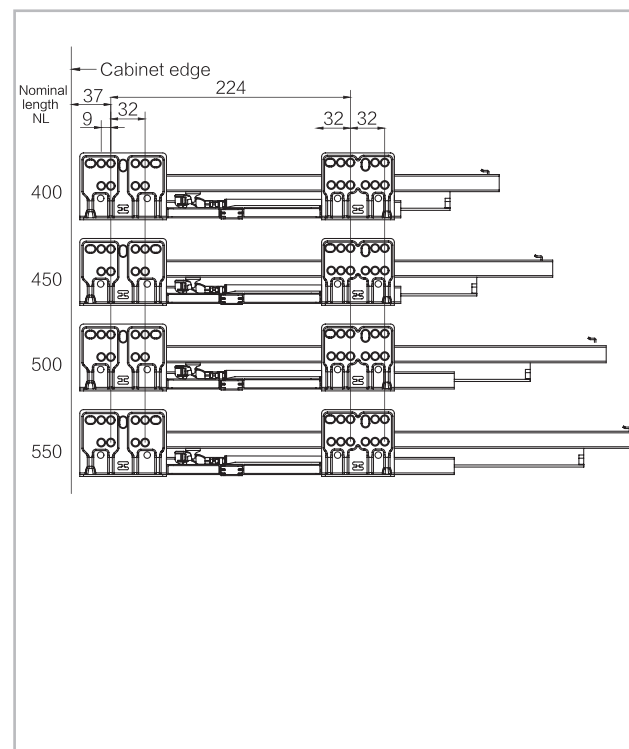
Nominal Slide Length=NL Internal Cabinet Depth=LT=NL+3



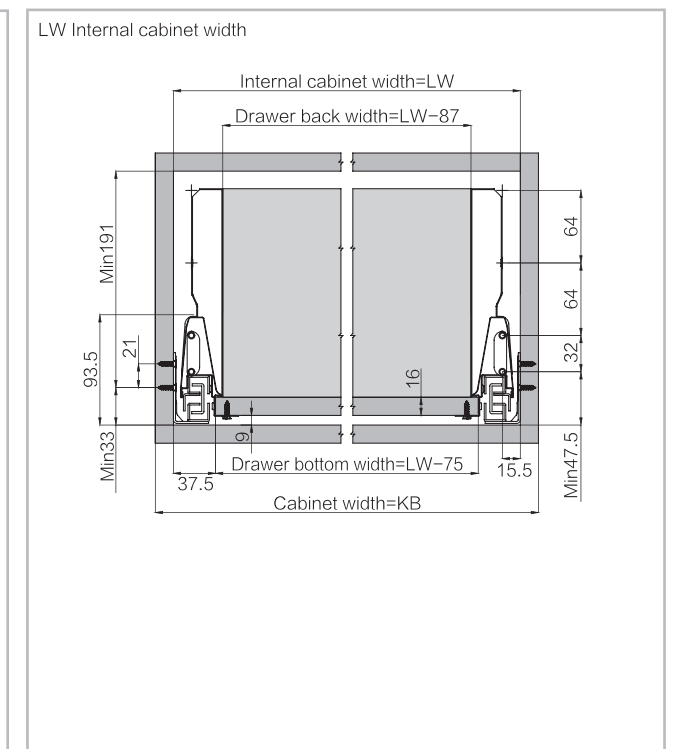
Drawer Installation dimensions(mm)



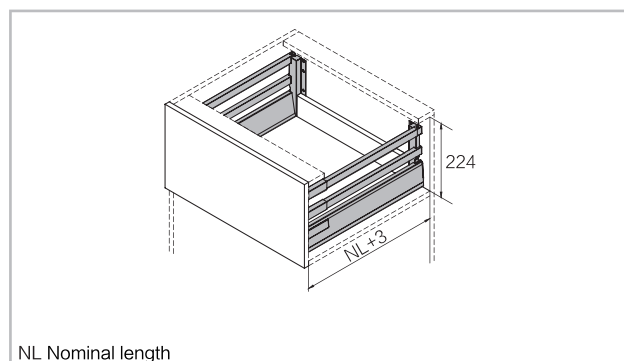
Screw Positions of the Sides(mm)



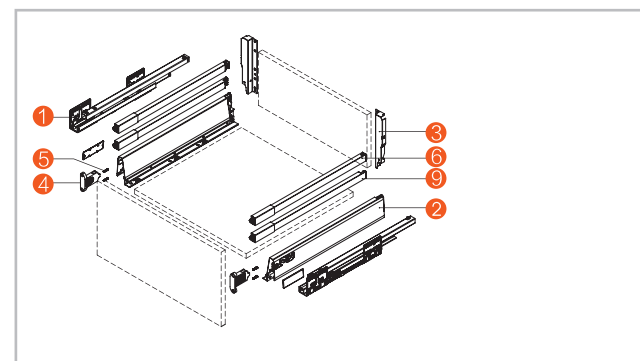
Installation Dimensions(mm)



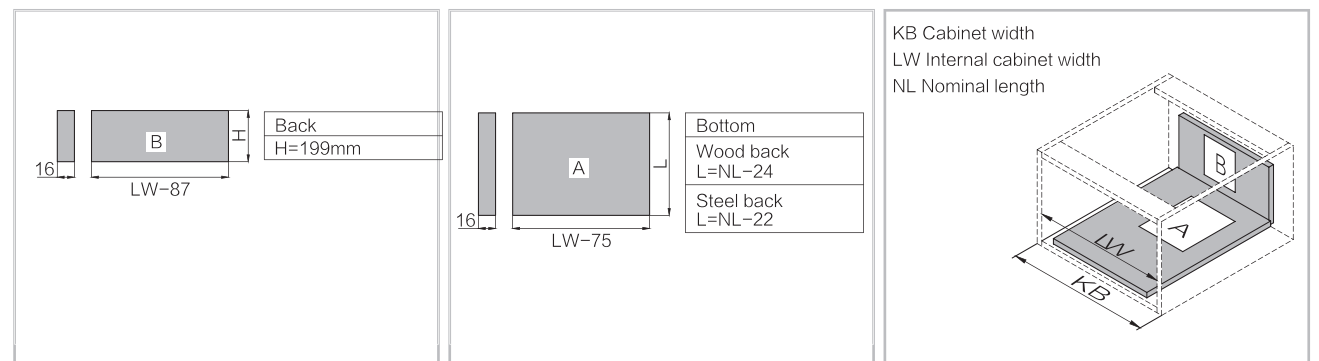
Space Requirement



The basic components



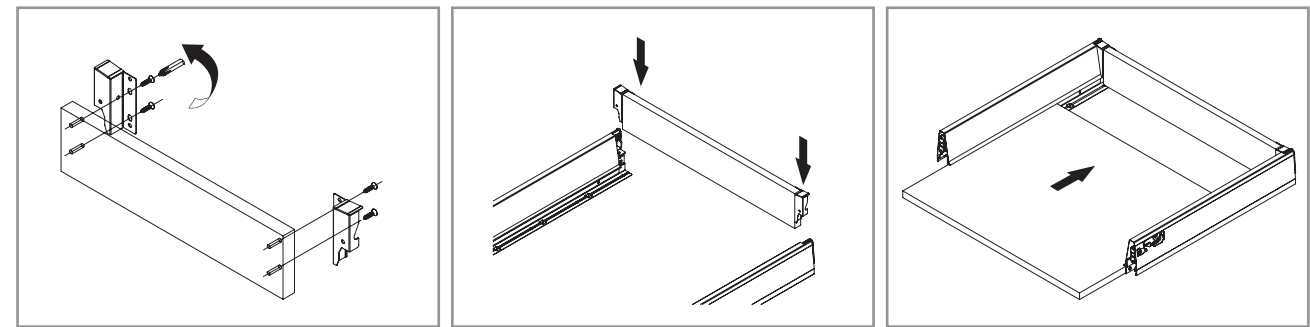
Drawer Back and Bottom Dimensions(mm)



908 SERIES SLENDER DRAWER

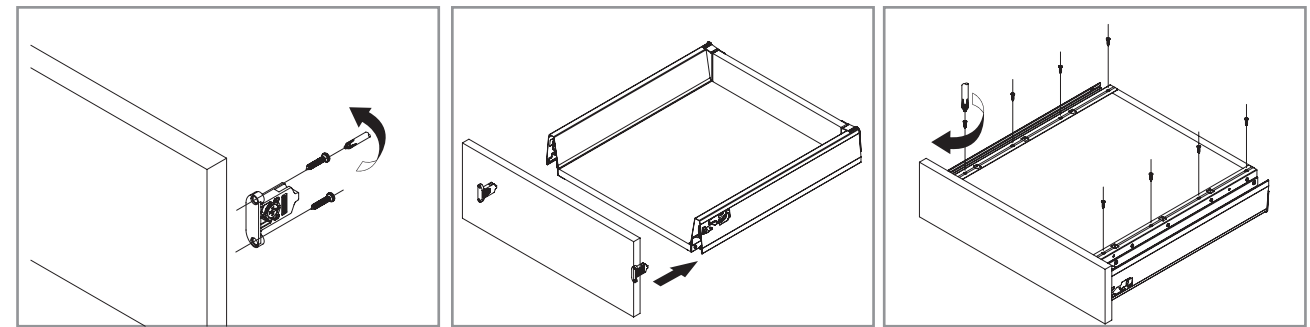
DRAWER - Assembly, Adjustment & Removal

Drawer installation



Back assembly

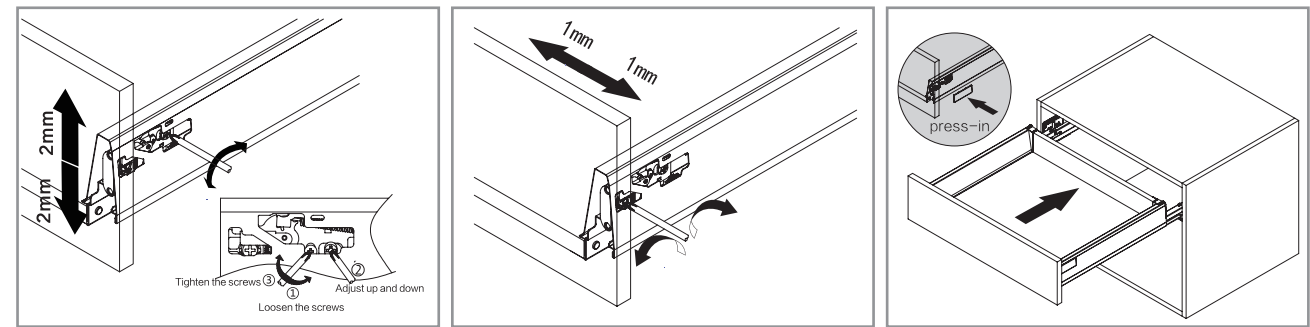
Bottom assembly



Front assembly

Fix screws

Adjustment

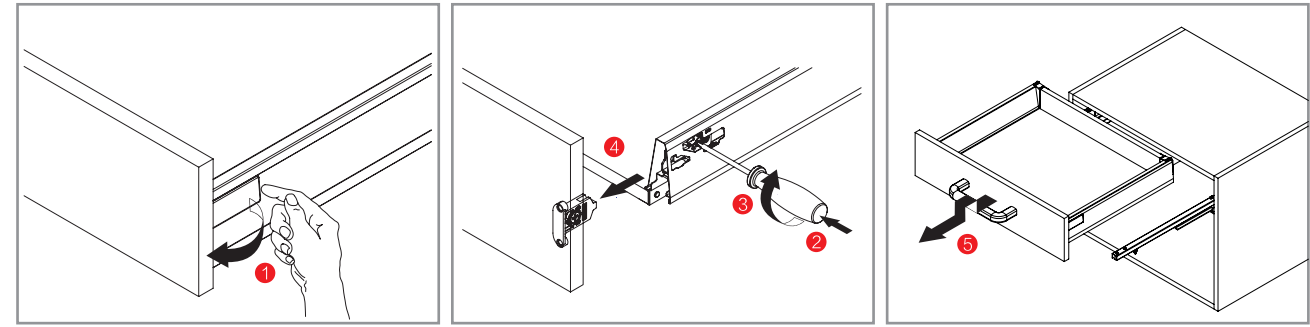


Up&down adjustment

Left&right adjustment

Slide into the cabinet

Removal

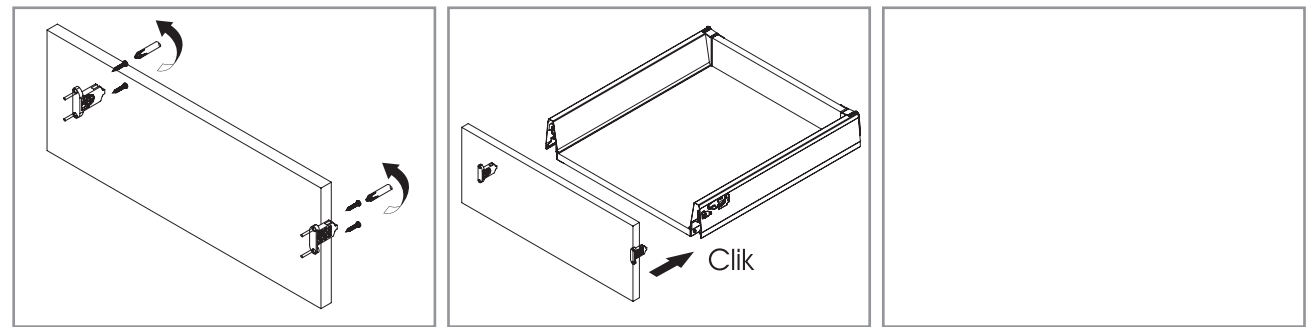


Tip up the cover and pull out

Turn screw driver to release the drawer

Pull out the drawer

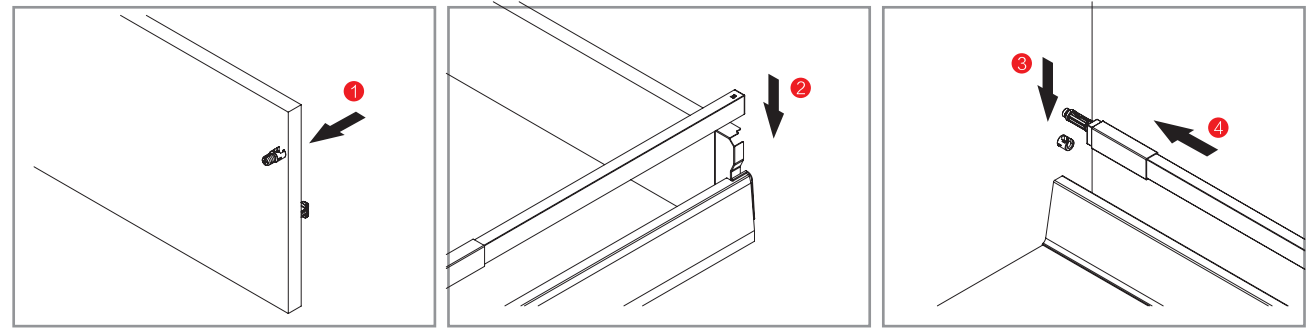
Lower Drawer



Front assembly

Clik

Mid Drawer

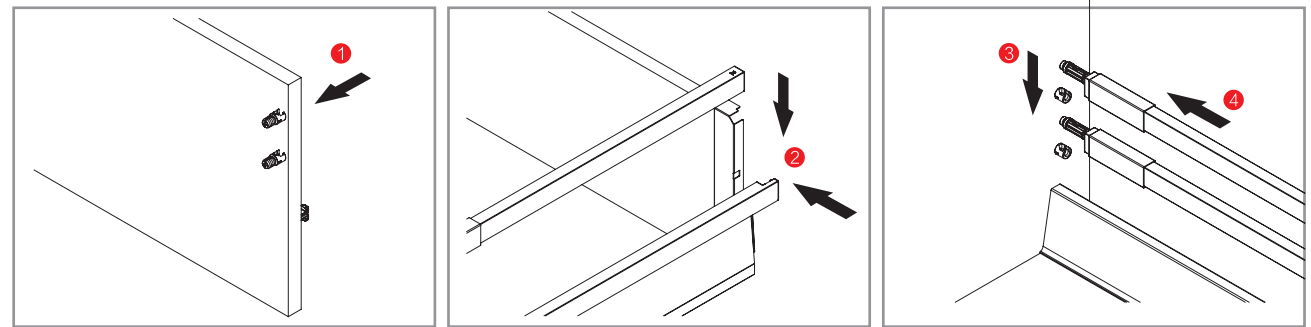


Front assembly

Back assembly

Fit the front

High Drawer

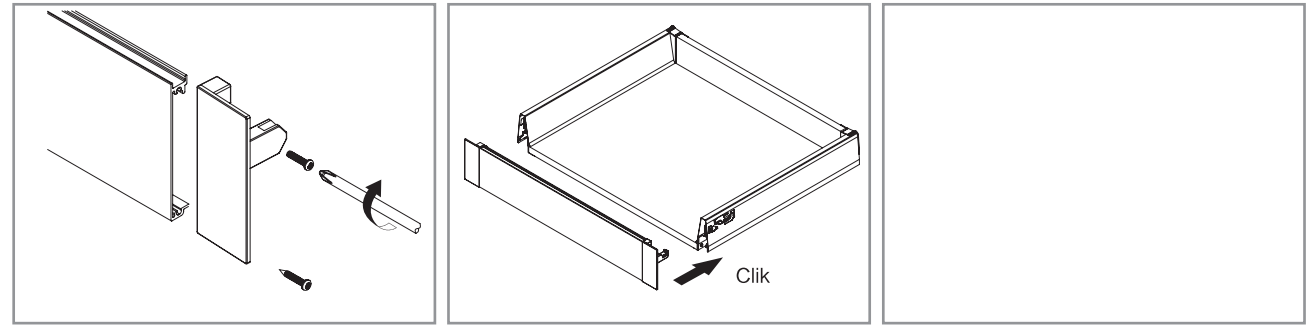


Front assembly

Back assembly

Fit the front

Inner Drawer



Front assembly

Clik